



Rick

Rick Doblin, MAPS founder and President, earned his Ph.D. in Public Policy from the Kennedy School of Government at Harvard University. Doblin was also in Stan and Christina Grof's first training group to receive certification as a Holotropic Breathwork practitioner.



Valerie

Valerie Mojeiko, Director of Operations and Clinical Research Associate, coordinates projects at MAPS' Love Creek office and facilitates psychedelic research around the globe. Formally educated at New College of Florida and the California Institute of Integral Studies.



Ilsa

Ilsa Jerome, Research and Information Specialist earned a PhD in psychology from the University of Maryland. She helps MAPS and researchers design studies, gathers information on study drugs by keeping abreast of the current literature and discussion with other researchers, creates and maintains documents related to some MAPS-supported studies, and helps support the MAPS psychedelic literature bibliography.



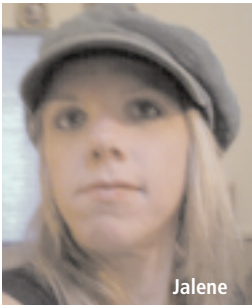
Josh

Josh Sonstroem, Technology Specialist and Events Coordinator, earned his B.A. in Philosophy and Religion from New College of Florida and is a chef, musician, poet and technologist. He immensely enjoys the depths of existential experience.



David Jay Brown

David Jay Brown, Guest Editor, earned his master's degree in psychology from New York University, and has been interviewing accomplished thinkers about their creative process for over 20 years. He is the author of *Mavericks of Medicine*, *Conversations on the Edge of the Apocalypse*, and five other books about the frontiers of science and consciousness. To find out more about David's work see: www.mavericksofthemind.com



Jalene

Jalene Otto, Membership and Sales Coordinator, studied philosophy and sociology at Cabrillo College and the University of California, Santa Cruz. She is a story weaver and a mother.

MAPS: Who We Are

MAPS IS A MEMBERSHIP-BASED ORGANIZATION working to assist researchers worldwide to design, fund, conduct, obtain governmental approval for, and report on psychedelic research in humans. Founded in 1986, MAPS is an IRS approved 501(c)(3) non-profit corporation funded by tax-deductible donations from members.

"Most of the things worth doing in the world
had been declared impossible
before they were done."

— Louis D. Brandeis

If you can even faintly imagine a cultural reintegration of the use of psychedelics and the states of mind they engender, please join MAPS in supporting the expansion of scientific knowledge in this area. Progress is possible with the support of those who care enough to take individual and collective action.

THE MAPS BULLETIN

Each *Bulletin* reports on MAPS research in progress. In addition to reporting on research both in the United States and abroad, the *Bulletin* may include feature articles, reports on conferences, book reviews, Heffter Research Institute updates, and the Hofmann Report. Issues raised in letters, calls, and e-mail from MAPS members may also be addressed, as may political developments that affect psychedelic research and use.



©2008 Multidisciplinary Association
for Psychedelic Studies, Inc. (MAPS)
10424 Love Creek Road,
Ben Lomond, CA 95005
Phone: 831-336-4325
Fax: 831-336-3665
E-mail: askmaps@maps.org
Web: www.maps.org