

Awake Media is pleased to be the design and media partner for the Psychedelic Science 2013 program materials.



Awake Media creates brands, web sites, mobile apps, social media strategies, videos, and online events for entrepreneurs and organizations with innovative and world-changing ideas.

[awakemedia.com](http://awakemedia.com)  
831.713.9239

## MAPS: Who We Are

Founded in 1986, the Multidisciplinary Association for Psychedelic Studies (MAPS) is a **501(c)(3) non-profit** research and educational organization that develops medical, legal, and cultural contexts for people to benefit from the careful uses of psychedelics and marijuana.

MAPS furthers its mission by:

- Developing psychedelics and marijuana into prescription medicines.
- Training therapists and working to establish a network of treatment centers.
- Supporting scientific research into spirituality, creativity, and neuroscience.
- Educating the public honestly about the risks and benefits of psychedelics and marijuana.

MAPS envisions a world where psychedelics and marijuana are safely and legally available for beneficial uses, and where research is governed by rigorous scientific evaluation of their risks and benefits.

MAPS relies on the generosity of individual donors to achieve our mission. Now that research into the beneficial potential of psychedelics is again being conducted under federal guidelines, the challenge has become one of funding. No funding is currently available for this research from governments, pharmaceutical companies, or major foundations. That means that the future of psychedelic and marijuana research is in the hands of individual donors. Please consider making a donation today.

[maps.org/donate](http://maps.org/donate)



One out of three people suffering from posttraumatic stress disorder (PTSD) do not respond adequately to treatment.

**Can MDMA-assisted psychotherapy help?**

[mdmaptsd.org](http://mdmaptsd.org)



© 2013 Multidisciplinary Association for Psychedelic Studies, Inc. (MAPS)

309 Cedar Street, #2323

Santa Cruz, CA 95060

Phone: +1 831.429.6362

Fax: +1 831.429.6370

[askmaps@maps.org](mailto:askmaps@maps.org)

[maps.org](http://maps.org)

[mdmaptsd.org](http://mdmaptsd.org)



**Rick Doblin, PhD, Founder and Executive Director,**

earned his PhD in Public Policy from the Kennedy School of Government at Harvard University. Doblin was also in Stan and Christina Grof's first training group to receive certification as a Holotropic Breathwork practitioner.



**Michael Mithoefer, MD, Clinical Investigator/Medical Monitor,**

is a psychiatrist practicing in Charleston, SC, where he divides his time between clinical research and outpatient clinical practice specializing in treating posttraumatic stress disorder (PTSD) with an emphasis on experiential methods of psychotherapy. He is a certified Holotropic Breathwork Facilitator and trained in EMDR and Internal Family Systems Therapy.



**Annie Mithoefer, BSN, MDMA/PTSD Study Co-Investigator,**

is a Registered Nurse who lives in Charleston, SC where she divides her time between clinical research and outpatient clinical practice specializing in treating posttraumatic stress disorder (PTSD) with an emphasis on experiential methods of psychotherapy. She is a certified Grof Holotropic Breathwork Practitioner and is trained in Hakomi Therapy.



**Brad Burge, Director of Communications,**

earned his B.A. in Communication and Psychology from Stanford University in 2005 and his M.A. in Communication from the University of California, San Diego in 2009. His graduate work focused on the political, scientific, and cultural changes required to make illicit drugs into legitimate medicines.



**Amy Emerson, Director of Clinical Research,**

earned her B.S. in genetics and cell biology from Washington State University. She has worked in clinical development and research for the last 15 years in the fields of immunology, oncology, and in vaccine development. Amy has worked with MAPS since 2003 facilitating the development of the MDMA clinical program.



**Valerie Mojeiko, Director of Operations,**

earned her B.A. from the California Institute of Integral Studies. In her work with MAPS' psychedelic harm reduction project, she has trained over 200 volunteers with skills for helping people who are undergoing psychedelic emergencies.



**Virginia Wright, Director of Marketing and Development,**

brings a wealth of fundraising experience to MAPS. Her firm Wright & Associates has provided strategic thinking, marketing, and fundraising services to arts organizations and cities throughout Northern California and Nevada. She received her B.A. in International Relations from San Francisco State University, and her M.B.A. from Santa Clara University.



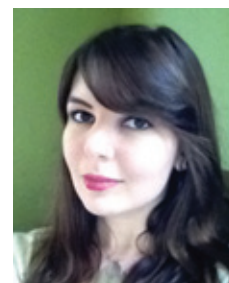
**Brian Brown, Development Associate,**

studied medical anthropology and visual culture at the University of California, Santa Cruz where he researched social prospects for psychedelics using a community centered approach. Brian is now developing MAPS' membership base by assisting with education and outreach efforts.



**Kynthia Brunette, Operations Associate,**

has a B.A. in Political Science, an M.S. in Human Computer Interaction, and a lifelong interest in models of personality and development. Her interests have evolved over the years into a fascination with the design of institutions, organizations, and experiences that serve as vehicles for transpersonal growth.



**Tess Goodwin, Development Assistant,**

has a B.A. in Psychology from the University of California, Santa Cruz, where she focused most of her time on social psychology and newspaper production. She is a mycophile, artist, and language enthusiast.



**Sarah Jordan, Publications Associate,**

earned her B.A. in Environmental Policy with a minor in Journalism from the University of California at Santa Cruz. Prior to joining MAPS, she was Communications and Development Assistant at Firelight Foundation in Santa Cruz, CA.



**Ilisa Jerome, PhD, Research and Information Specialist,**

earned a Ph.D. in psychology from the University of Maryland. She helps MAPS and other researchers design studies, gathers information on study drugs by keeping abreast of the current literature and discussion with other researchers, creates and maintains documents related to MAPS-supported studies, and helps support the MAPS psychedelic literature bibliography.



**Bryce Montgomery, Multimedia Associate,**

studied film production at West Valley College, joining MAPS as Social Media Intern in the summer of 2011. Bryce now serves as Multimedia Associate, bringing his background in film production and social media to public education about psychedelics.



**Linnae Ponté, Executive and Clinical Research Assistant and Harm Reduction Coordinator,**

earned her BA in Biological Psychology from New College of Florida. She's assisted data collection and analysis at University of South Florida's Cardiovascular Psychophysiology Laboratory, MOTE Marine Mammal Aquarium Psychophysical Laboratory, East-West College of Natural Medicine, and the West Mamprusi Civic Union in Ghana, West Africa.



**Berra Yazar-Klosinski, PhD, Lead Clinical Research Associate,**

earned her Ph.D. in Molecular, Cell, and Developmental Biology from University of California Santa Cruz, where she also served as president of the Graduate Student Association. After attending Stanford University, she worked as a Research Associate with Geron Corporation and Millennium Pharmaceuticals.

