

MAPS: Who We Are



Executive



Rick Doblin, Ph.D.,
Founder and
Executive Director



Merete Christiansen,
Executive Associate
and Assistant to Rick
Doblin, Ph.D.

Communications and Marketing



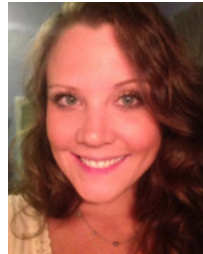
Brian Brown,
Communications and
Marketing Manager



Brad Burge, Director of
Communications
and Marketing



Sarah Jordan,
Publications Associate



Cara LaChance,
Social Media and
Multimedia Associate



Amy Mastrine,
Web Assistant

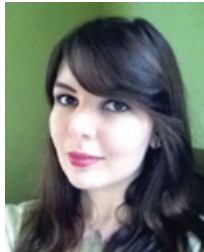


Bryce Montgomery,
Content Manager

Development



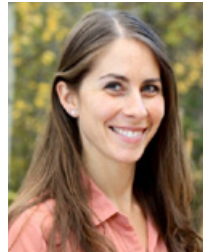
Erik Brown,
Development Manager



Tess Goodwin,
Accounting and
Development
Consultant



Jade Netanya Ullmann,
Development Officer
and Connector



Sara Gael, M.A.,
Director of Harm
Reduction,
Zendo Project



Shannon Clare Petitt, M.A.,
MFTI, Therapist Training
Program Coordinator and
Zendo Project Community
Engagement Coordinator



Chelsea Rose, M.A.,
MFTI, Zendo Project
Event Operations
Coordinator

Harm Reduction (Zendo Project)

Operations



Aidan Boling,
Operations Associate



Kynthia Brunette,
Event Volunteer Manager
and CRM Systems
Specialist



Jenni Vierra,
Administrative
Associate

Policy and Clinical Research



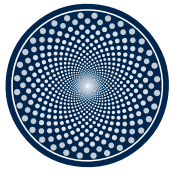
Ismail Ali,
Policy Fellow



Natalie Lyla Ginsberg,
Policy and Advocacy
Manager



Berra Yazar-Klosinski, Ph.D.,
Clinical Research Scientist



MAPS Public Benefit Corporation

The **MAPS Public Benefit Corporation (MPBC)** is a wholly owned subsidiary of MAPS. The special purpose of MPBC is to balance income from the legal sale of MDMA with the social benefits of MAPS' mission by serving as a vehicle for conducting MAPS' psychedelic and marijuana research initiatives.

MPBC's primary work is completing Phase 2 studies of MDMA-assisted psychotherapy for PTSD, and preparing for the Phase 3 clinical trials required to develop MDMA-assisted psychotherapy into an approved treatment for PTSD. MAPS continues to conduct education and harm reduction projects, to raise funds for MPBC projects, and serve as parent organization and sole funder of MPBC. MPBC was incorporated on December 19, 2014.

MAPS Public Benefit Corporation



Amy Emerson,
Executive Director and
Director of Clinical
Research



Michael Mithoefer, M.D.,
MDMA/PTSD Study
Clinical Investigator/
Medical Monitor



Annie Mithoefer, B.S.N.,
MDMA/PTSD Study
Co-Investigator



Allison Feduccia, Ph.D.,
Clinical Trial Leader



Colin Hennigan,
Clinical Data Manager



Charlotte Harrison,
Senior Clinical
Research Associate



Ilsa Jerome, Ph.D.,
Research and
Information Specialist



Rebecca Matthews,
Clinical Trial Leader



Sarah Sadler,
Study Coordinator



Ben Shechet,
Study Coordinator



Allison Wilens,
Clinical Study
Associate

Founded in 1986, the Multidisciplinary Association for Psychedelic Studies (MAPS) is a **501(c)(3) non-profit** research and educational organization that develops medical, legal, and cultural contexts for people to benefit from the careful uses of psychedelics and marijuana.

MAPS furthers its mission by:

- Developing psychedelics and marijuana into prescription medicines.
- Training therapists and working to establish a network of treatment centers.
- Supporting scientific research into spirituality, creativity, and neuroscience.
- Educating the public honestly about the risks and benefits of psychedelics and marijuana.

MAPS envisions a world where psychedelics and marijuana are safely and legally available for beneficial uses, and where research is governed by rigorous scientific evaluation of their risks and benefits.

MAPS relies on the generosity of individual donors to achieve our mission. Now that research into the beneficial potential of psychedelics is again being conducted under federal guidelines, the challenge has become one of funding. No funding is currently available for this research from pharmaceutical companies or major foundations. That means that the future of psychedelic and marijuana research is in the hands of individual donors. Please consider making a donation today.

maps.org/donate